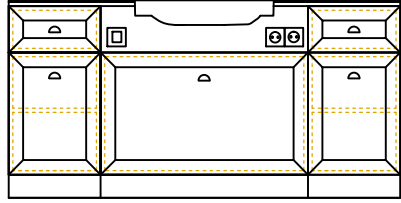
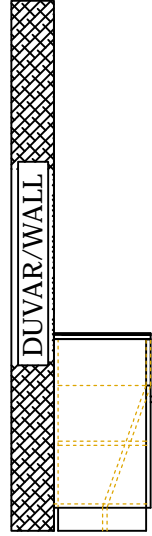


1

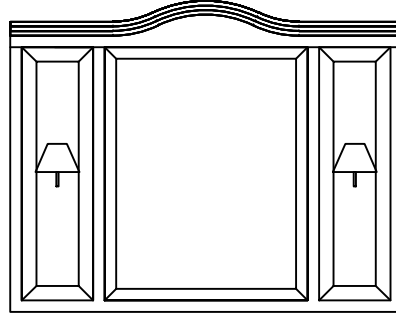


Alt modül uygun konuma getirilir, 2 Adet 6x80 vida ile sıkılır.

The lower module is brought to the appropriate position and tightened with 2 6x80 screws.



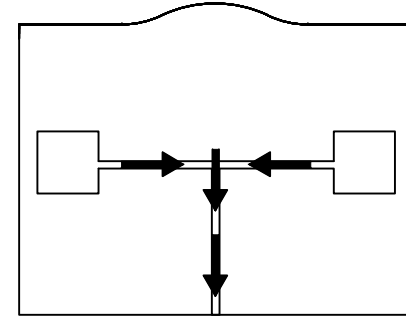
2



Arka panoya ,apliklerin montajı yapılır.

Wall sconces are mounted on the rear panel.

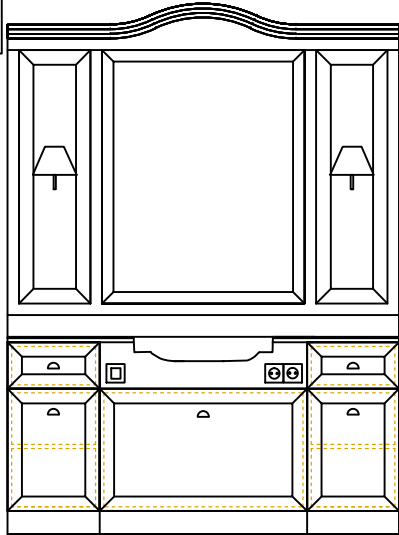
3



Arka pano tezgah üzerine oturtulur, aplik kabloları tezgah alt orta boşluk kısmından çıkartılır.

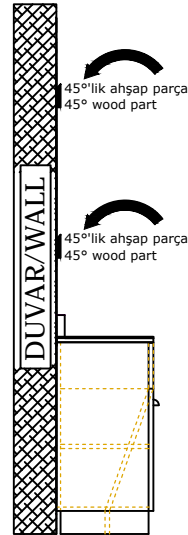
The rear panel is placed on the bench, the sconce cables are removed from the lower middle space of the bench.

4



Ayna 2 Adet 45 askı aparatlarından duvara asılır.

The mirror is hung on the wall from 2 pieces of 45 hangers.

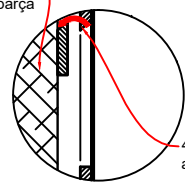


45°'lik ahşap parça  
45° wood part

45°'lik ahşap parça  
45° wood part

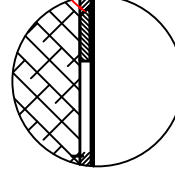


45°'lik duvara monte parça



45°'lik kesilmiş ayna arkası

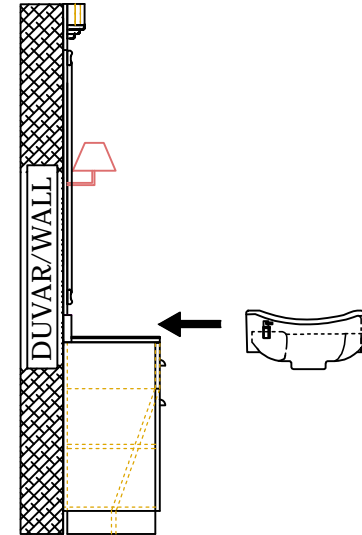
45°'lik yüzeyler üst üste gelecek



45°'lik parçanın ölçü alınacağı ALT NOKTA

45°'lik ahşap parça

5



Aplikler, lavabo ve elektrik bağlantısı yapılır.

Wall sconces, sink and electrical connections are made



ÜRÜN ADI: ANTIQUE ERKEK TEZGAHI\_ MONTAJ ŞEMASI / ASSEMBLY DIAGRAM

ÇİZEN: Sibel MERİÇ

TARİH: 09.02.2021

ÖLÇÜLER : cm (santimetre'dir)  
Çizim üstünden ölçü alınmalıdır.  
Measurements are in cm.