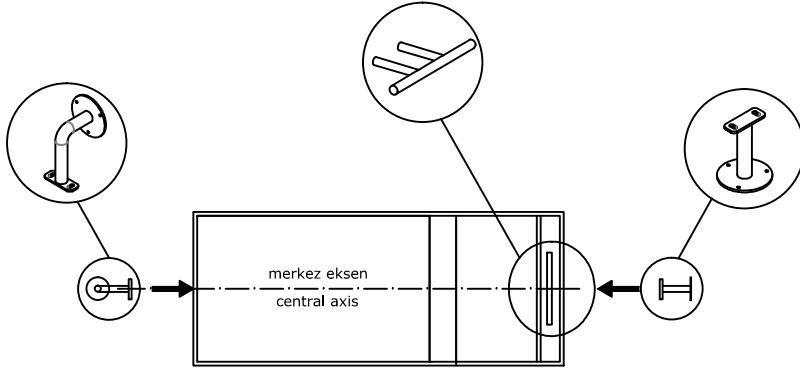


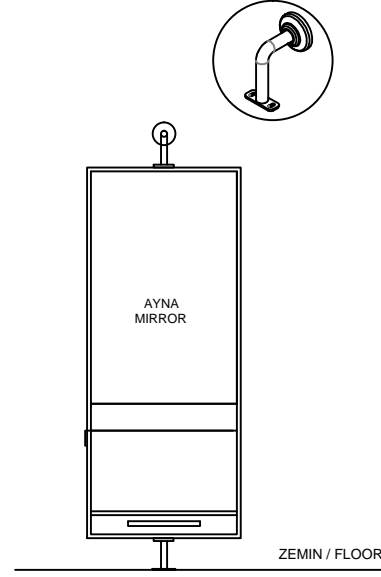
1



Tezgah gövdesi zemine paralel şekilde konulur,  
tavan ve taban boruları slot delikli flanşlardan  
4 Adet M8x20 civatalar ile gövdeye sıkılır  
Ayak basma borusu 2 Adet M10x60 civata ile sıkılır.

Unit is placed parallel to the floor,  
ceiling and floor pipes are made of slot hole flanges  
It is must fix to unit with 4 M8x20 bolts.  
Footrest pipe is tightened with 2 pieces of M10x60 bolts.

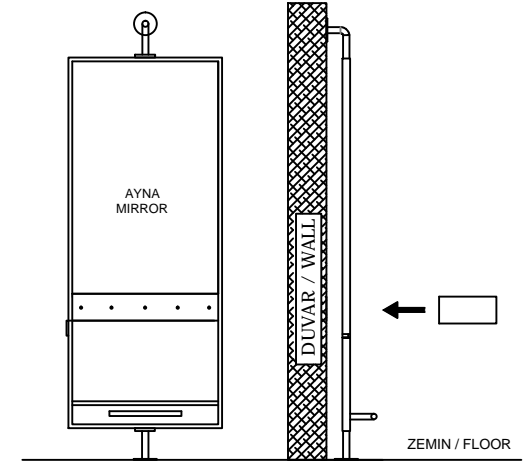
2



Duvara ve zemine flaş deliklerinden tespit edilen  
montaj yerleri markalanarak, delinir.  
Dübel ile çakıldıktan sonra tezgah  
dikey konuma getirilir  
6 Adet 6x80 vida ile sıkılarak, metal kapak  
duvara kapalı paralel konuma getirilir.

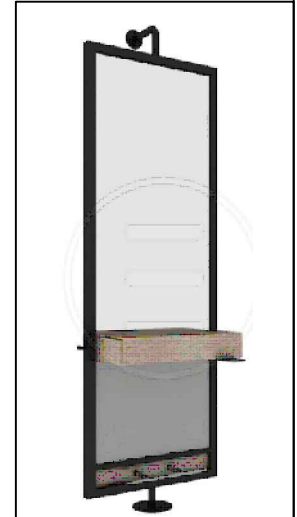
Fixed to the wall and floor through flange holes  
The mounting points are marked and drilled.  
Unit after nailed with dowel  
placed in vertical position  
Metal cover, must fix with 6 pieces of 6x80 screws  
it is brought to the closed parallel position to the wall.

3



Tezgah tablası profile  
5 Adet 4x38 vida ile sıkılır.

Worktop profile must fix  
It with 5 pieces of 4x38 screws.



ÜRÜN ADI: DIABLO BAYAN TEZGAHI\_MONTAJ ŞEMASI / ASSEMBLY DIAGRAM

ÇİZEN: Sibel MERİÇ  
Designer:

TARİH: 18.01.2021  
Date: OLÇÜLER: cm (santimetre'dir)  
Çizim üstünden ölçü alınmalıdır.  
Measurements are in cm.