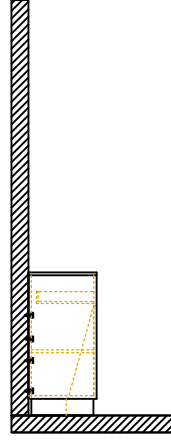
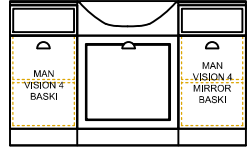


1

6x80

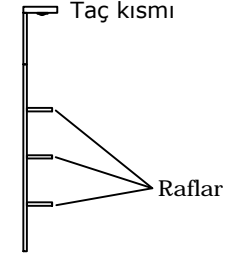


Toplu olan lavabosuz alt bölümü duvara ünitenin içinden 6x80 vida ile vidalayıp sabitlenir.

Fix the bottom of the unit to the wall with 6x80 screws from the inside .

2

3.5x50

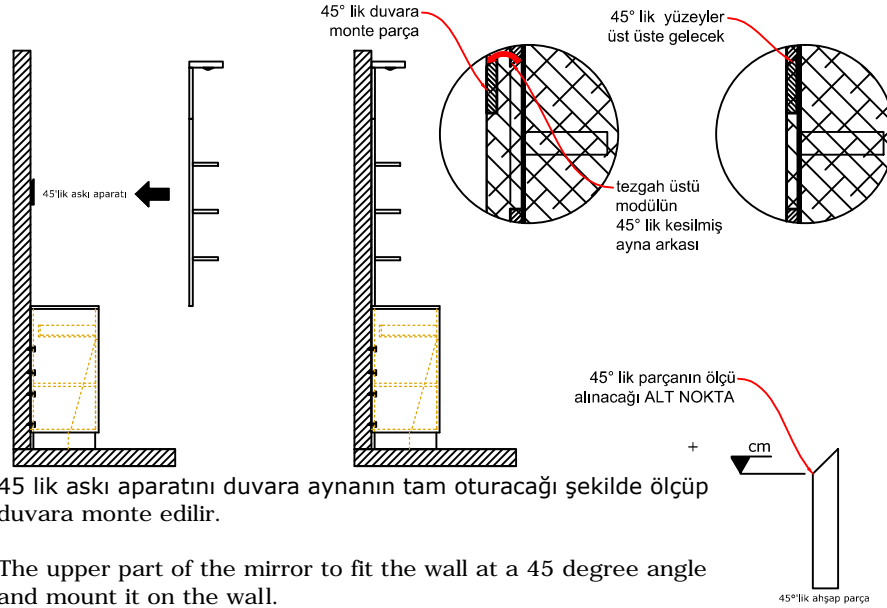


MONTAJ SEMASI
Assembly Instruction

Ayna bölümüne ; raflar ve en üst taç kısmı 3,5x50 vida ile monte edilir.

Mirror section, racks are mounted with top crown part 3.5x50 screw .

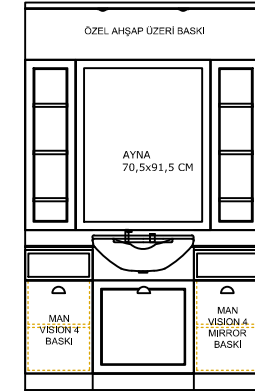
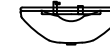
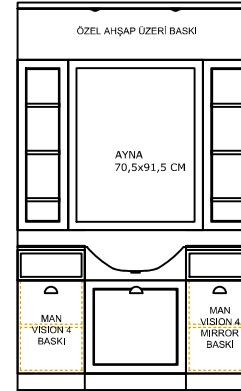
3



45 lik askı aparatını duvara aynanın tam oturacağı şekilde ölçüp duvara monte edilir.

The upper part of the mirror to fit the wall at a 45 degree angle and mount it on the wall.

4



Lavabo tezgah üstüne monte edilmeden kapakların gönyeleri ayarlanır.

Adjust of the cabin doors and make wiring connections.

En son olarak lavabo tezgaha monte edilir.

Finally mount the sink on the unit.

ÜRÜN ADI:
Name of product

TRUVA DARK-LIGHT MAN

ÇİZEN:
Designer

DUYGU İLKHAN

TARİH
Date:

ÖLÇÜLER: cm (santimetre'dir)
Çizim üstünden ölçü alınmamalıdır.
Measurements are in cm.