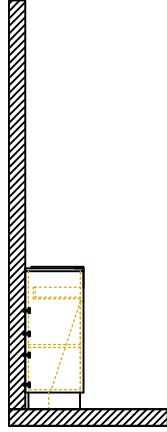
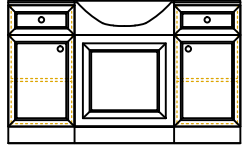
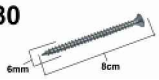


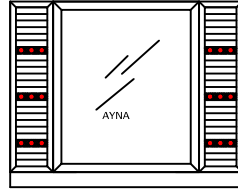
1 6x80



Toplu olan lavabosuz alt bölümü duvara ünitenin içinden 6x80 vida ile vidalayıp sabitlenir.

Fix the bottom of the unit to the wall with 6x80 screws from the inside.

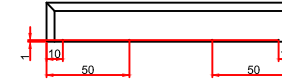
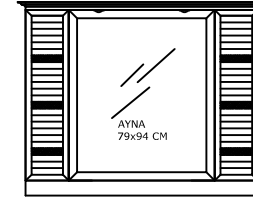
2 3.5x50



Ayna dik konuma getirilir, raflar arka paneldeki çizgiye sıfır gelecek şekilde hizalanarak ortalanır ve 3 Adet 3,5x50 vida ile sıkılır.

The mirror is brought to an upright position, the shelves are aligned to the line on the back panel and centered and tightened with 3 pieces of 3,5x50 screws.

3

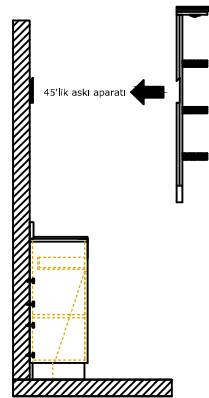
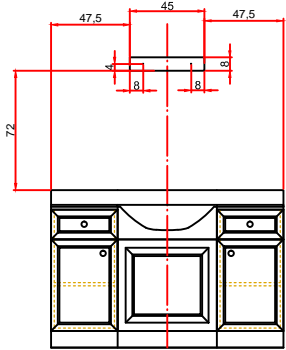


Üst taç ters çevrilerek, verilen ölçülere göre ø3mm'lik matkap ucu ile delinir. Arka kısmı sıfırlanarak, 4 Adet 3,5x50 vida ile sıkılır.

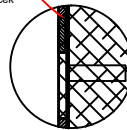
The upper crown is turned over and drilled with a ø3mm drill bit according to the dimensions given. It is tightened with 4 pieces of 3,5x50 screws by zeroing the back part.

MONTAJ SEMASI
Assembly Instruction

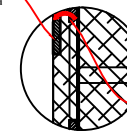
4



45°'lik yüzeyler üst üste gelecek



45°'lik duvara monte parça

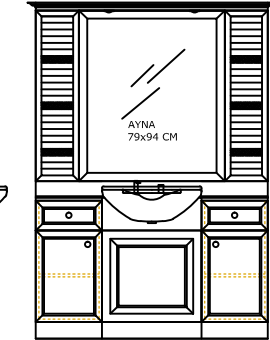
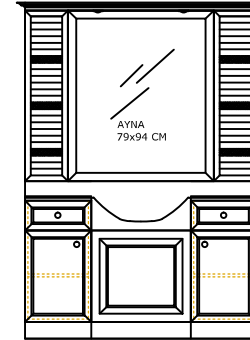


tezgah üstü modülün 45°'lik kesilmiş ayna arkası

45 lik askı aparatını duvara aynanın tam oturacağı şekilde ölçüp duvara monte edilir.

The upper part of the mirror to fit the wall at a 45 degree angle and mount it on the wall.

5



Lavabo tezgah üstüne monte edilmeden kapakların gönyeleri ayarlanır.

Adjust of the cabin doors and make wiring connections.

En son olarak lavabo tezgaha monte edilir.

Finally mount the sink on the unit.

ÜRÜN ADI:
Name of product

CLASSIC MAN

ÇİZEN:
Designer

SIBEL MERIC

TARİH
Date:

12.04.2021

ÖLÇÜLER: cm (santimetre'dir)
Çizim üstünden ölçü alınmamalıdır.
Measurements are in cm.